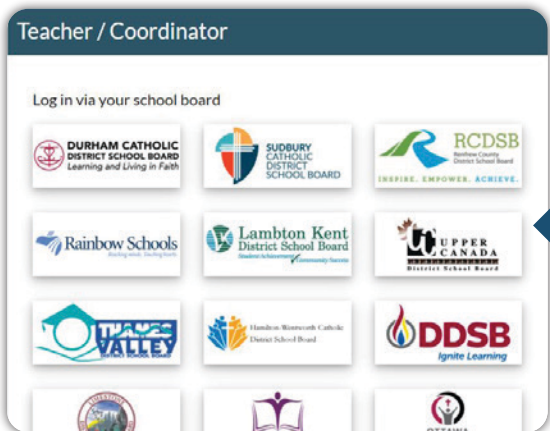


Each user who wishes to connect to MTEL must follow these instructions:

1. Please try to connect to [mtel.ca](https://mtel.ca) so that your username can appear in the list of users;
2. Then ask your board coordinator to grant you access and to assign you the corresponding school or schools.

## Here are the steps:

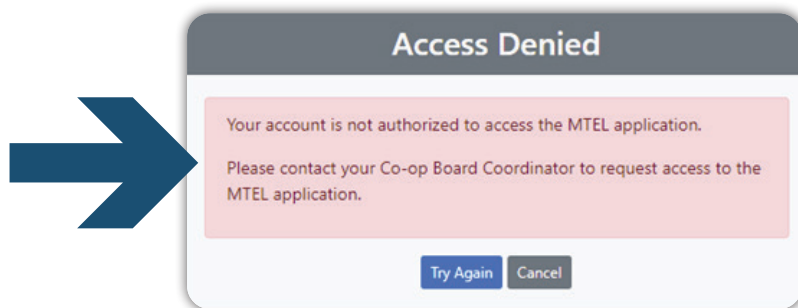
You can log in by visiting [mtel.ca](https://mtel.ca) and press the Login button.



## Connect as Teacher / Coordinator:

Click on your school board and you will be redirected to your school board's login page. Enter the usual information for your school board login (your access code/email and password).

On your first attempt, you will receive an "Access Denied" message. This is normal, it is part of the two-step security activation. Once you receive this message, email your board coordinator to grant you access.



**QUESTIONS?** Please contact us at • [mtel@lecentrefranco.ca](mailto:mtel@lecentrefranco.ca) • 613 691-7039